

# Holistic Curriculum With **INNOVATION** & **DESIGN** **Thinking**







# GoldenBee Global students learn, innovate, lead and make a difference



## Our Vision

Our vision consists of a world where every child will grow up to their peak potential and at the same time enjoy a joyful learning experience. Not only they will be academically successful, they will have all round development including life skills, sports, Arts, and also build critical thinking capabilities to innovatively solve problems in their journey of life.



## Our Mission

We aim to provide a world-class learning experience to all our pupils and prepare them for real-world challenges. Nonetheless, doing this requires us to merge the already established teaching models with the recent developments in educational technologies and techniques. Through this, we make learning exciting and engaging even if a concept is complex for a child, and also ensure that the children develop Innovation and Critical thinking capabilities.





# Goldenbee Global The Bee Hive Of Learning

Our holistic education with focus in building Design Thinking and Innovation capabilities, believes that every child has a unique brain that shapes how he/she absorbs and responds to stimuli. One way of teaching does not work for every child. We need to teach the way they learn, not force them to learn the way we teach.



## WHO ARE WE?

We are an organization that focuses on the overall development of students by catering for them with the best quality education. Our motto does not settle on education based on mere numbers and alphabets, but we focus on hands-on learning experiences to tackle the hurdles of tomorrow.

## WHAT DO WE DO?

We prepare the kids to face the future real-world with quality education and life-experiencing teaching methods. Our teachers are extremely dedicated and helpful to make the students bring out their hidden genius in every field.







## WHY CHOOSE US?

GOLDENBEE provides a conducive environment for students to learn, innovate, lead and make a difference for themselves and the world around them. It boasts an effective curriculum, a dynamic innovation & Design thinking Lab that's one of its kind, and the latest infrastructure imparting a desire for lifelong learning in children.

**Holistic Learning Curriculum:** We offer a 360-degree holistic curriculum designed to meet the needs of all of our students. The GOLDENBEE curriculum along with intellectual and academic development aims to encompass the cognitive, physical, spiritual, social, artistic, creative and emotional aspects of a child's development. By 'holistic approach' we mean that we will 'help children be the most they can be'.

**Innovation & Design Thinking Studio:** Embedded as part of our school curriculum, it is a unique laboratory along with training programs that lead to critical thinking, innovation in practices and a future focussed learning in children.

**Best Infrastructure:** An appealing feature that is part of our infrastructure is the EduTech applications that leads to better parent-institution interactions, safe transportation and convenient fee payment options. Spacious corridors, smart classrooms with digital learning tools such as e-boards and tablets, access to science & computer labs equipped with the latest technology and a state-of-the-art library are just some of the facilities available at GOLDENBEE school. We also have an excellent indoor sports centre and a high-tech sports emporium. We have a safe & secure transport system with a tracking GPS system. An impressive canteen is also built within the premises serving hygienic and nutritious food.





# GEMS OF GOLDENBEE

## ACADEMIC EXCELLENCE

Nurturing students to achieve academic excellence through innovative teaching methods and helping them grow.

## HOLISTIC DEVELOPMENT

Learning beyond the classroom through extra-curricular activities to ensure all-around development.

## PERSONAL ATTENTION

We follow the 1:14 ratio for pre-primary and primary and the 1:28 teacher-student ratio for middle & secondary respectively.

## BEST IN CLASS INFRASTRUCTURE

The world-class edifice provides the best academic and extracurricular activities.

## SAFE ENVIRONMENT

To provide a safe and sound environment to the students through comprehensive security measures and 24\*7 surveillance.



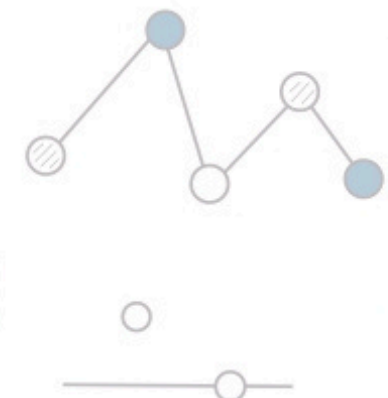
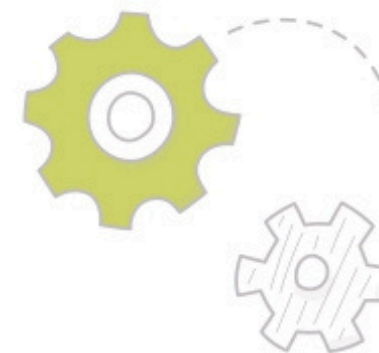




## What is innovation and design thinking?

*“Not everybody can be a Newton, so innovation is about giving a new turn.”*

Innovation and Design Thinking is a new concept where we focus on bringing out something new by experimenting with the existing. Improvement is the essence of innovation, the ability to create something new that was not ever thought of with the existing. Design Thinking allows us to adopt a human-centered perspective in creating innovative solutions while also integrating logic and research. In order to embrace Innovation and Design Thinking, we need to ensure that we have the right mindsets, collaborative teams, and a conducive environment.





# Curriculum and Methodology

## **Scripted curriculum developed in-house exclusively for GOLDENBEE:**

Specialised, scripted, interdisciplinary curriculum that is developed in-house by a team of academicians with expertise in school education and child development.

## **Conforms to the Board (CBSE, CISCE and Cambridge UK) guidelines and objectives:**

This scripted curriculum is aligned to the standards prescribed by the educational boards (CBSE, CISCE and Cambridge UK).

## **Integrated Curriculum based on the principle of subject interweaving:**

While studying a particular topic, like Social Science, it gets integrated with Social Studies, Environmental Education, Mathematics and Science. This approach trains students to view knowledge as a WHOLE and see connections between different disciplines, thus enabling students to apply their learning to solve real life situations.

**Experiential and activity-based learning:** Our students are exposed to a wide range of activities that promote experiential learning which is an essential element of our academic programme.

## **Methodology based on Gardner's Theory of Multiple Intelligences and Bloom's Taxonomy of Learning Domains:**

Our teaching methodologies include the practical application of leading learning theories such as Dr. Howard Gardner's Theory of Multiple Intelligences, Kolb's Model of Experiential Learning, Bloom's Taxonomy of Learning Domains and other recent teaching approaches.

**Learning through different sensory modalities - VAK Model of learning:** Students are given many opportunities to learn through different sensory modalities – Visual, Auditory and Kinesthetic (VAK model). We believe that every student has his/ her own preferred style of learning and our curriculum provides them with ample opportunities to learn in accordance with their dominant learning modalities.

**Encourages critical enquiry and creativity:** Our teaching modules are replete with Hands-on-learning activities, audio-visual aids, experimentations and activities that form a part of the Enquiry-based Learning Strategies.

The Reading Corner, an element in every classroom, serves to open up the world beyond classroom learning. The reading corner is stocked with Enrichment sheets (designed in-house) on the topics learnt in class, the purpose of these sheets being to take students deeper into the concepts.

**Learner-centric approach to child development:** The main thrust of teaching methodology is to bring the child to the centre of the learning process in order to promote overall development.







CBSE



ICSE

## Pre-primary

(Playgroup, Nursery, Junior KG, and Senior KG)

- Focusing on conceptual learning and nurturing curiosity in young minds.
- Hands-on learning experience with creative activities.
- Development of comprehensive skills, stamina, balance & rhythm.
- Unique learning curriculum with motor skill development for kinesthetic learning.
- Focusing on every young mind with a 1:14 teacher-student ratio.

## Secondary

(Grade VIII-XII)

- Proficient in advanced knowledge, concepts and skills.
- Scripted curriculum for detailed and enhanced learning.
- Preparing grades IX, X, XI & XII for their milestone.
- Preparing for competitive exams – JEE, NEET, etc. by in-house IIT & Medical graduates.
- Amalgamation of ICSE/CBSE syllabus with an international approach of the Cambridge Board.

# Goldenbee Pedagogy

Level Of Schooling | Core Curriculum

## Primary

(Grade I – IV)

- Introduction to Electronics through puzzle circuits in Grades I & II.
- Literacy – Various prose, drama, poetry, and non-fiction.
- Language – Honing creative writing skill and reading comprehension.
- Information and Communication Technology – Advancing electronics through puzzle circuits and devices.
- Mathematics – Emphasising problem-solving, logical reasoning and analytical skills.

## Middle

(Grade V-VII)

- Mathematics – Focusing on problem-solving, critical thinking, and analytical thinking.
- Physical Education – Excellent indoor and outdoor games to improve vision and speed, spatial, and hand-eye coordination skills.
- Language Skills – To present ideas publicly and gain confidence.
- Advanced robotics curriculum.
- Hands-on experience with real-life examples.





# Our Special Features



- Holistic development through a balanced educational programme including academics, athletics, curricular and extracurricular activities
- Unique curriculum and lab for imparting Innovation & Design thinking capabilities.
- We are associated with Atal Incubation Mission through that start up India, we are providing seed capital to nurture young business minds.
- Specialised Innovation studio set up in our school to learn and innovate new ideas.
- We have launched the Junior CEO of Bangalore event to find young talents.
- Stringent quality guidance and audit system to maintain uniformity of quality across all GOLDENBEE schools.
- Experiential learning through field trips, excursions, special days and events.
- Child friendly infrastructure and amenities in line with updated international developments in learning tools and methodologies.
- The entire classroom with its infrastructure serves to support and augment learning.
- The display boards inside the classroom, having visual teaching aids, form an integral part of the learning process as well.
- Well established system and processes for school administration: Our constant endeavour has been to provide the best of services to our parents. We truly value their time and so to provide them ease and convenience, we have an online Fees Payment system. Through this system all the Miscellaneous fees like Café fees, Bus fees, External Examination fees and other payments can be made easily.
- Teacher training - We take great care in selecting the teachers who facilitate the growth of our students. In addition to being well-trained and qualified, our teachers are honed regularly to upgrade their expertise through training workshops developed and conducted in accordance with national and international standards.





## Sports and performing arts

Students get coaching under the Sports and Performing Arts programme from Grade 1 onwards.

The SPA programme provides a variety of professionally managed facilities to both orchestrate the involvement in and hone skills in sports. The choices include: Fitness & Games (Compulsory), Dance, Music, Speech & Drama, Swimming, Judo, Skating, Gymnastics and Basketball.



## Highlights of the SPA programme

We have a structured curriculum for Sports & the Performing Arts, which includes both in and outside class experiences.

Students are exposed to various sports which facilitate the development of kinesthetic and spatial skills.

The inherent capability of the student is identified in selected sports and specialised training is provided in those areas.

SPA provides a platform for them to excel in a sport/performing art and represent the school in inter-school and state level competitions.





# Hands-On Learning Method

**‘Learning by doing’** is the form of education we impart at GOLDENBEE – a form of education in which children, instead of listening to a teacher about a given subject, engages with the subject matter to create something or solve a problem. It is the process by which children learn by actually using their hands, because little children are inherently programmed to learn by observing, copying, and experimenting with their hands and body. Learning involves play which continues from birth to be the most important form of education. All activities that involve the hand such as cutting, sticking, sorting, moulding, or manipulating helps to develop the fine precision needed for important real-world tasks like making clay models and writing with a pen.

**Stem Labs** (Science Technology Engineering Maths): Our STEM labs emphasize on STEM Education that educates through Build, Play and Learn the concept, using custom-designed educational kits & sets and STEM toys. More than 100 models can be constructed using these toys. Students experience an immersive learning experience through theme-based lessons, and are trained to solve meaningful challenges through hands-on building and programming in our labs. STEM is an amalgamation of Science, Technology, Engineering, and Maths as these four fields share an emphasis on innovation, problem solving, and critical thinking. We acknowledge the need for it in the future and are imbibing the knowledge of it in our kids to give them a futuristic approach to education, enabling students to learn in a systematic, scientific and logical manner.







## Kids Club

Kids Club is a comprehensive and structured Day-Care programme that offers safe and educational 'after school- hours' engagement options for children of working parents.

Our day-care facility is equipped with air-conditioned spacious class rooms, child-friendly toys, outdoor play area with a teacher-child ratio of 1:10 and a professional faculty to offer academic assistance as well as domestic care to students. Delicious and nutritious meals are provided to the students. We provide the environment which promotes optimum development of your child in all areas.



## Post School Activities

While academia is definitely on top of the list of our priorities, we believe that your child has certain talents that are beyond books and classroom learning. We have specially designed a curriculum of after school hours activities that will enhance your child's talents and interests in Sports and Performing Arts.

## Educational Tours

GBG introduces a delightful educational tour plan for all our students. Let your child travel through these handpicked locales to be an explorer in true sense!

Our approach extends to all the destinations we choose contributing to meaningful and transformative learning. Travel brings to young minds what books cannot. Experiential learning helps students gain new perspectives, develop important 21st century skills and become true global citizens. The exposure to multifaceted cultures opens new opportunities to define career paths and goals. Each unique segment is created to give students a perfect milieu for adventure and learning.





# GOLDENBEE Career Foundation Programme (GCFP)



We believe in making the students learn from the masters. Carrying this thought forward, GOLDENBEE has collaborated with PHYSICSWALLAH, ensuring a stronger academic foundation. Our aim is to prepare our students for various competitive exams like GATE, JEE, NEET, UPSC, NDA, CA Foundation and many more.



Physics Wallah is India's top online ed-tech platform that provides affordable and comprehensive learning experience to students of classes 6 to 12 and those preparing for JEE and NEET exams. Physics Wallah also provides extensive NCERT solutions, sample papers, NEET, JEE Mains and BITSAT previous year papers, which makes us a one-stop solution for all resources.

We are glad that Physics Wallah is available for the first time in Bangalore, and we are coming with an experiential and integrated learning centre in our campus.



# Personalised Learning Centre (PLC)

We recognise that each child has his/her unique learning potential as well as differing developmental needs. Thus, it is imperative that every effort must be made to optimise their learning in positive and inclusive ways. With this aim, Personalised Learning Centres provides counselling services and learning support for students with differential needs. Individualised Educational Plan (IEP) is prepared by PL Teachers for students displaying academic concerns. The IEP takes both strengths and challenges into consideration, using student's strengths to improve his or her challenges.

Similarly, Individualized Counselling Programme (ICP) is prepared by PL Counsellors for students displaying behavioral concerns.

Parents and teachers are guided to deal with academic, behavioural, social, emotional, developmental needs of the student.

The PLC Staff also provides guidance and counselling to parents on effective parenting styles. The PLC Staff implements vocational guidance programme for high school students.



**STUDENT TEACHER RATIO**

We maintain a ratio of 1:14 so that every student gets the attention they need to strive. In case of specially-abled students, they are taken care of by an individual teacher all the time.



**HEALTH CARE CENTRE**

We take utmost care of the health of the child, we have in-house first-aid kits & trained professionals and on-call doctors. We conduct awareness programs on mental health, child abuse, bullying, peer pressure, and adolescence.



**VIDEO ANALYSIS**

Through CCTV footage, experts in this field track and analyse regular classroom activities like students' attention in a class, teachers' engagement skills, movement of students and many other actions.



**BUZZY BEE**

The monthly magazine, published by the school, is exclusively 'by the students' and 'for the students'. Celebrating creativity in students, they are encouraged to write their own articles. This initiative has brought forth students' diverse talents in different fields.





## G-EMBARC

G-EMBARC is an initiative that aims to take learning beyond the confines of the classroom and provide opportunities to students to experience and learn in realistic and prolific learning environments.

G-EMBARC aims at equipping students to succeed in work and life and make significant contribution to the society.

## Programmes Offered

### G-NC: GOLDENBEE High Nature's Club

The G-NC is an effort to develop sensitivity towards the environment. It aims to spread awareness about being 'Environmentally Sound'.

### G-GC: GOLDENBEE High Greadders' Club

The G-GC is a Literary Club that offers a lot more than a regular reading club. Besides equipping students with a rich vocabulary, enhanced reading and writing skills, it focuses on developing a keen interest in reading, interpreting texts, discussion and exchange of student ideas and learning from the experience of eminent authors.

### G-SSRC: GOLDENBEE Students' Social Responsibility Cell

The SSRC is a community of dedicated students who voluntarily pledge their time and efforts to work towards social causes. It undertakes several time bound social engagement activities that encourages students to contribute for the betterment of the society.

### EUMIND – EUROPE Meets INDIA

EUMIND is a platform for networking between schools in India and Europe. Schools in India and Europe that affiliate with the EUMIND Network do online projects and organise visits of teachers/Principals and exchanges of students.

### GOLDENBEE MUN Club

MUN is an academic simulation of the UN where students role-play as diplomats of countries in different UN committees such as the WHO, World Bank, Security Council and others.



# CROWN OF HONOUR





# Best-In-Class Infrastructure For A Safe & Sound Learning

We, at GOLDENBEE, believe in nurturing the idea of school being the **'Second Home'** to our young minds. We have child-friendly infrastructure and amenities in line with updated international developments in learning tools and methodologies.

The entire classroom with its infrastructure serves to support and augment learning. The display boards inside the classroom, having visual teaching aids, form an integral part of the learning process as well. Our Innovation & Design Thinking Smart-Studio, Science labs, and Robotics labs are well equipped with Modern Infrastructure which enables every child to improve academic performances and learn through hands-on experiences.



## Smart Classroom

Digi boards in every classroom to enhance classroom learning



## Music Rooms

Decked up with a variety of musical instruments, to express and enhance their expertise



## Playgrounds

Spacious & suitable for all kinds of games and sports activities



## Science Labs

Latest technology equipment with lab experts



## Skating Rinks

Outdoor rinks for a little unwinding each week



## Basketball Courts

Perfect courts and complemented with professional guidance



## Computer Labs

Latest generation of computers with high-speed internet



## Library

A variety of books offering a myriad of knowledge



# Safety & Security Our Priority



Qualified Staff



Bearer Cards



Classroom doors without locks



Periodic emergency drills



360 Degree surveillance through CCTV cameras



Trained Security guards



Female staff on every bus



Security controlled entry & exit



Fire compliance



GPS equipped Buses



Background check on every staff



UHF ID Cards to Kids





## We Are Equipped With Technology

### Parent Portal (ERP)

An application for the parent to stay informed of announcements, daily classwork and homework, or even details of fee payments and certificates received.

### Weekly Communications

In case of any school assessments, the marks and reviews are communicated on a weekly basis.

### PTMs

Parent Teacher Meets are organised to notify the parent of their child's development.

### POPs

Parent Orientation Program is conducted for the Parent of Grades I and II to induct them through the entire year's academic and activity curriculum.

### Coffee Meet

Coffee Meet is conducted every 6 months to discuss grade-specific common issues that the parents face.

### PTA Committee

This committee meets 4 times a year where a PTA member flags off common issues faced by the parent throughout the year to the principal.

### Safety & Security Committee

This meeting is every month, where parents are taken around the campus by the head of Security, the Principal & the BDM.

### Circulars

Timely E-mail circulars for current happenings, Competitions, Events or urgent notices are forwarded to the parents.

### SMS Updates

SMS updates also include a timely announcement of Events or any immediate announcement that needs to be addressed by the parent and daily attendance send to parents.



# HIVE VIVA

## VIVA HIVE

VIVA HIVE, as we graciously see it, is one of the most awaited and prestigious inter school fests. It creates ripples of enthusiasm and has entrenched itself in the psyche of students from numerous schools. VIVA HIVE encourages the youth to be creative, imaginative, enterprising and vibrant. Teamwork, individual achievement, respect for peers, parents and teachers, awareness of the world, acquisition of knowledge, honing new skills and finding out about one's strengths and areas of improvement is the sui generis feature of VIVA HIVE. The learning is tremendous!

The VIVA HIVE Workshops and Competitions are always eagerly awaited and are conducted in the school campus itself and cultural competitions attract the very best of talents from different schools.





# A Glimpse Of Our Campuses & School Activities







# Our Campuses

EXPLORE OUR CAMPUS AND LEARN HOW WE CAN SHAPE YOUR CHILDS' FUTURE



BANNERGHATTA CAMPUS



BTM LAYOUT CAMPUS



HORAMAVU CAMPUS



## Bannerghatta Campus

Survey No. 137, Phase 2, Tejaswini Nagar, Doddakammanahalli Road

## BTM Layout Campus

P.M Building 41, 4th Main, Bannerghatta Main Rd, Behind Shoppers Stop, NS  
Palya, Stage 2, Bengaluru, Karnataka 560076

## Horamavu Campus

263/264 Patel Hanumanthiah Road, Kalkere, Horamavu, Bangalore – 560043